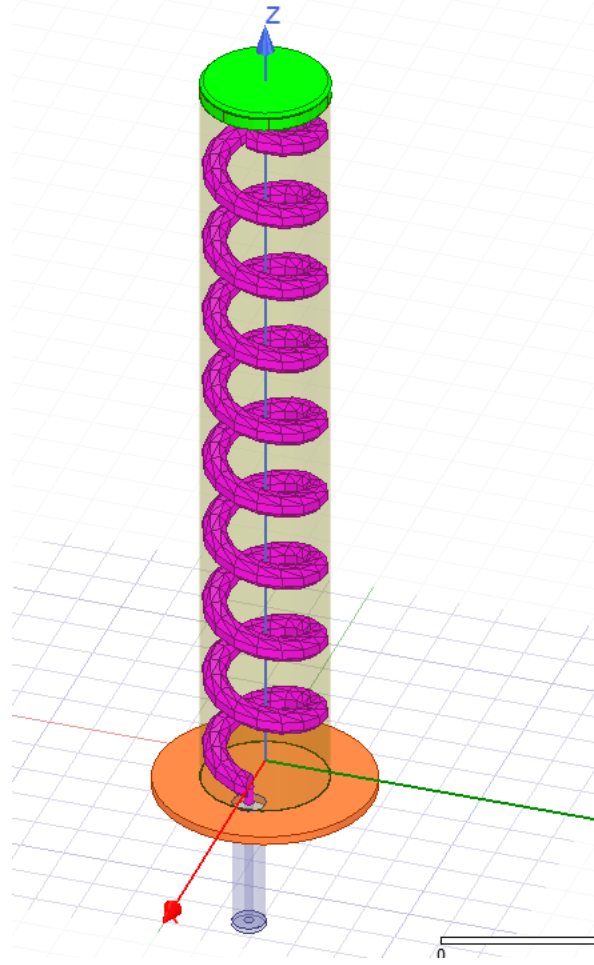
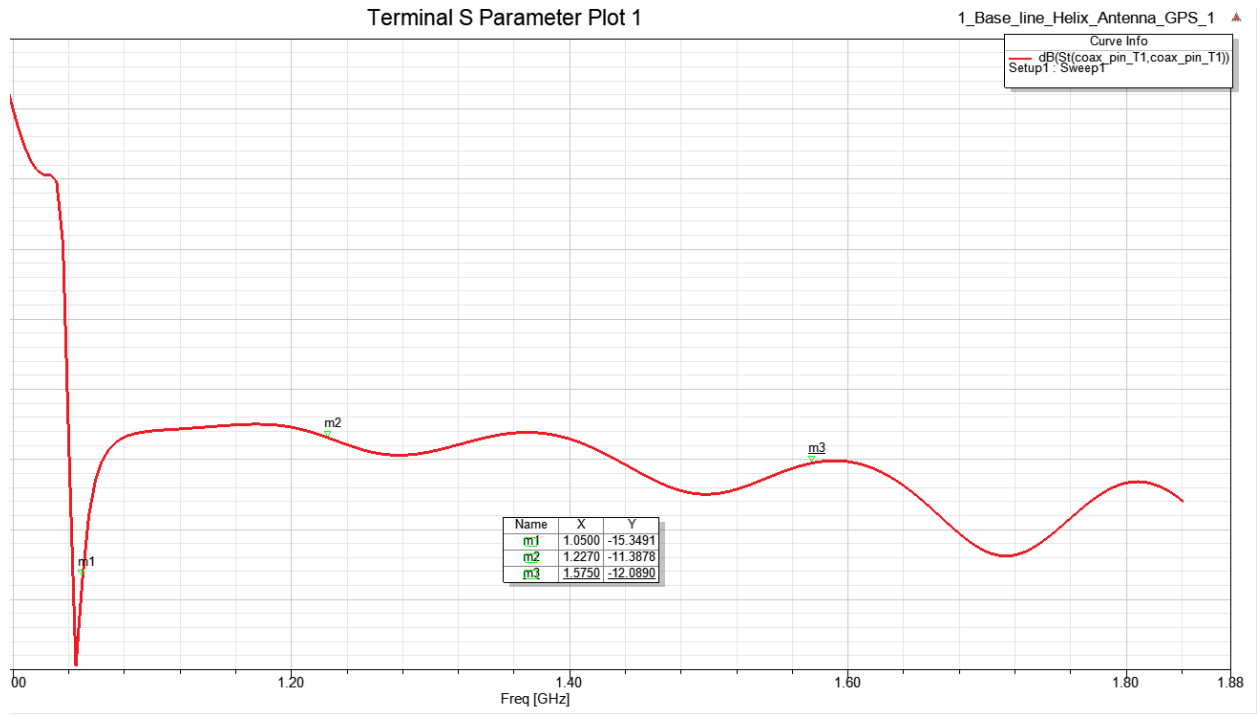
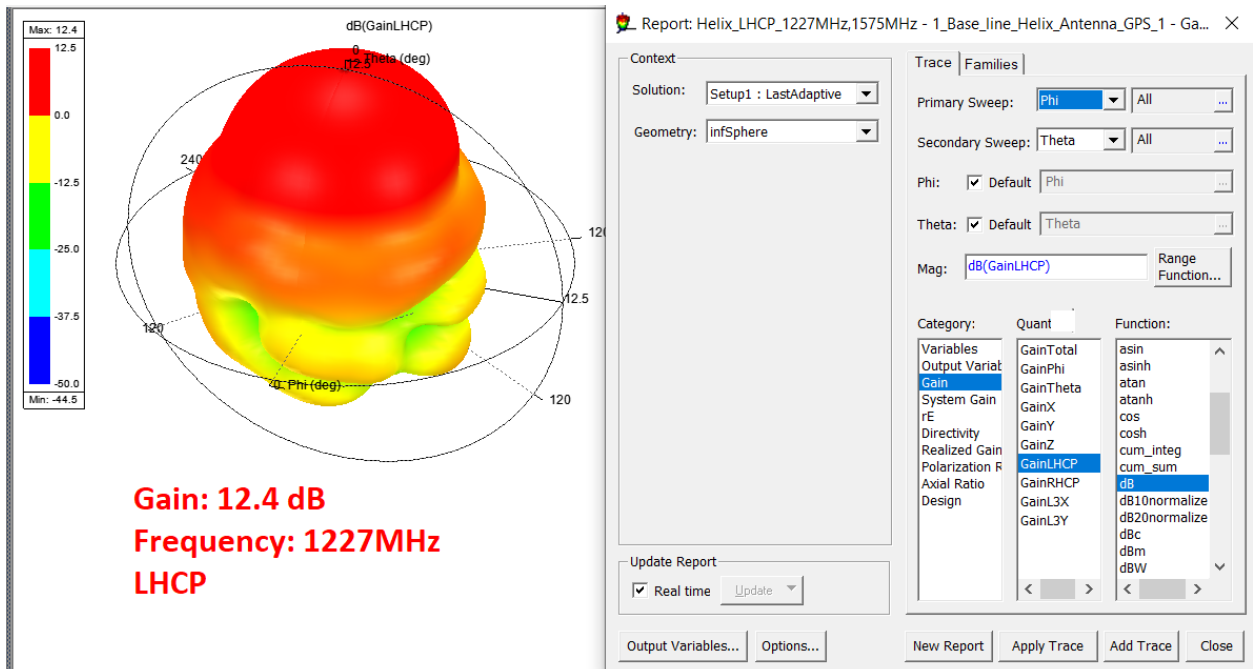


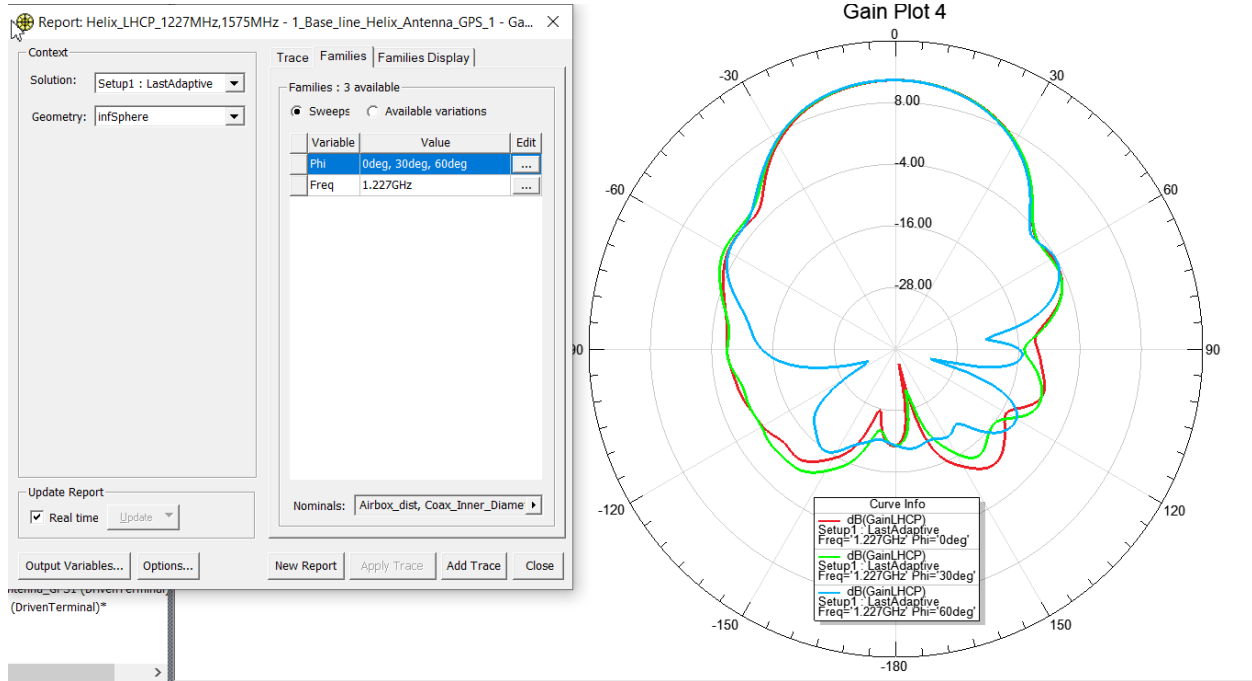
L1/L2 GPS/L-Band (1.0-2.0 GHz) Helix Antenna
17.5x2.56-1227/1575-LHCP-Passive



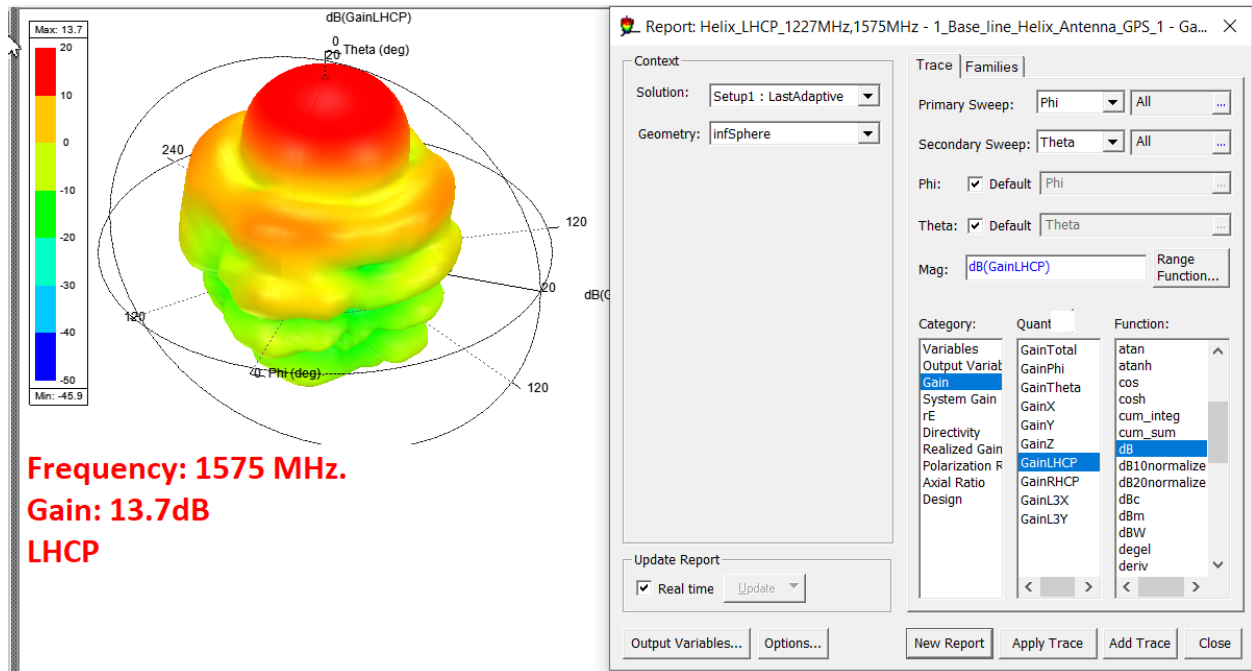


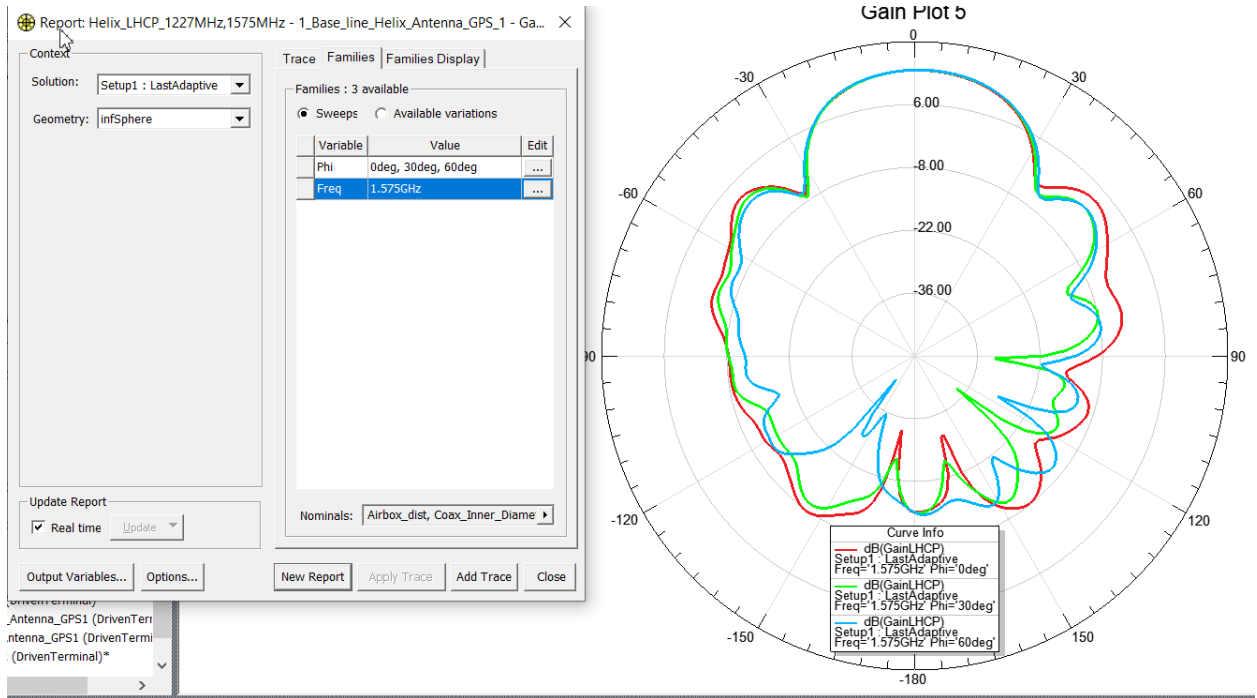
1) Frequency: 1227 MHz





2) Frequency: 1575 MHz





Electrical :
L1/L2 GPS/L-Band (1.0-2.0 GHz) Helix Antenna
17.5x2.56-1227/1575-LHCP-Passive

Mechanical:
Base plate: Aluminum.
Helix element: Copper
Radome: Fiber Glass
Designed: Victor Dat Do